

Consonant Blends

A consonant blend consists of two or three consonants whose sounds are blended together. Each letter sound is heard in the blend. The most common beginning consonant blends include the following: bl, br, cl, cr, dr, fl, fr, gl, gr, pl, pr, sl, sm, sp and st. The common three consonant blends are: str, spl, and spr.

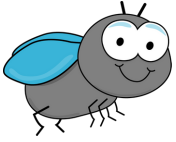
Teachers will usually teach the "L" blends first and then move onto the "R" blends.

Consonant Blends & Consonant Digraphs

While the consonant blends allow you to hear the sounds of both letters in the blend; the consonant digraph brings the letters together to create one sound. The most common digraphs are: ch, sh, th and wh.

Beginning Blends

Fill in the blanks with the correct consonants



___ __ y



___ __ ant



___ __ ue



___ __ oud



___ __ oves



___ __ ag



___ __ ower



___ __ ock



___ __ obe



___ __ ap